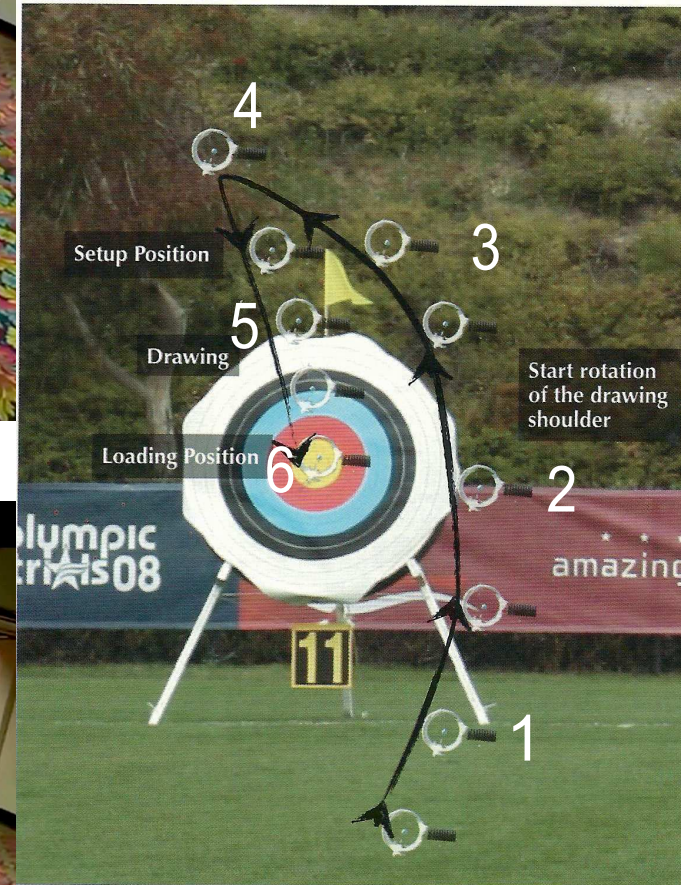
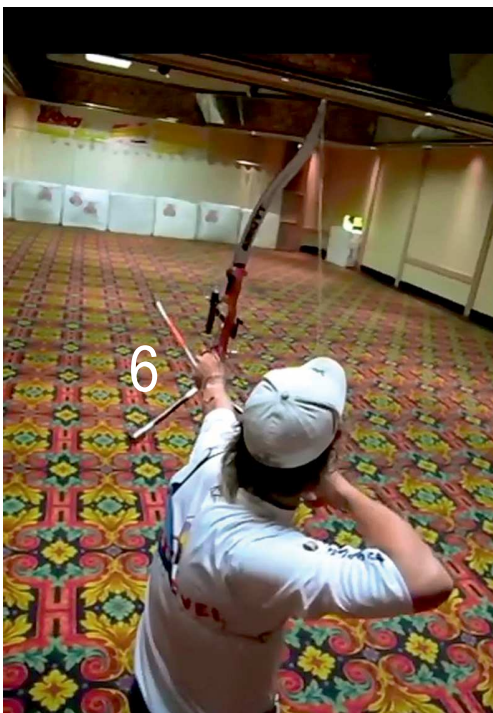
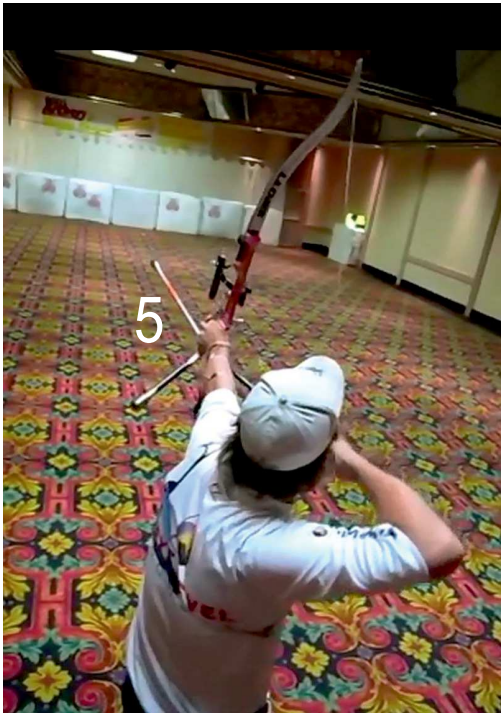
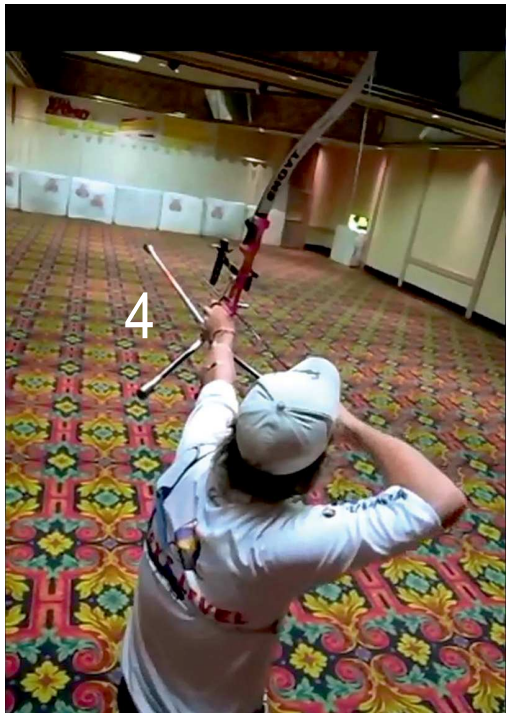


„ Inside the Archer” page 75:
Raising the bow in a small half moon does not mean to watch the sight pin while raising the bow. The sight pin symbol is only a creative medium. This arc shows only the archer's bow arm movement.

At the Setup position (between 4 and 5) the bow has a slight angle to the left, the drawing hand



is located not higher than the nose and the hand reaches its maximum distance from the archer's face during this movement. Because of the angle, the target point appears between the bow string and the bow. During the drawing phase (5 to 6) the bow turns in the archer's bow hand to the right and becomes aligned to the target point.